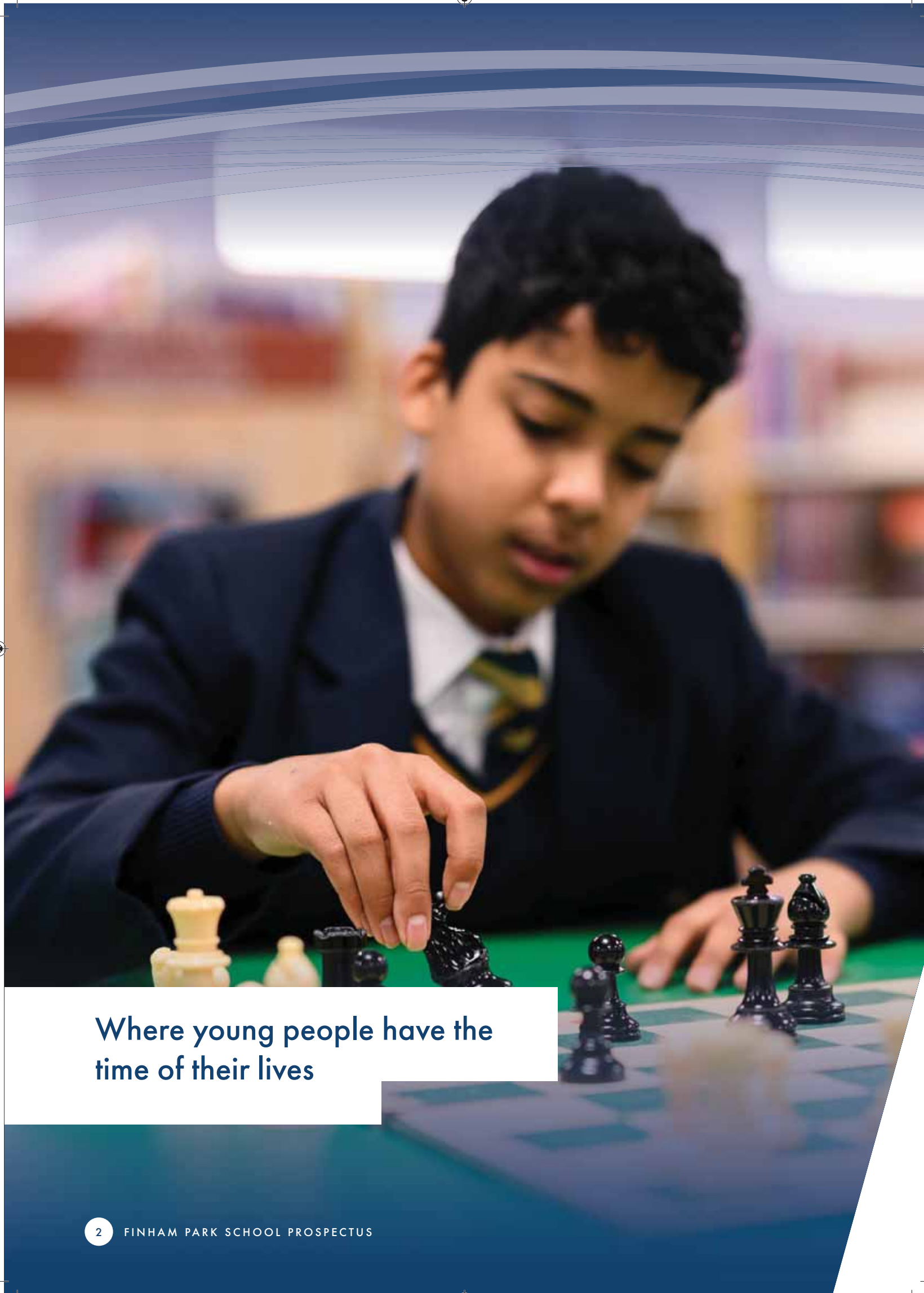




World Class Education



Where young people have the
time of their lives

Welcome



At Finham Park School we strive to inspire students through the delivery of an innovative "World Class" education. Our school is a beacon of excellence for the community where everyone feels safe, valued and included.

We ensure that students are given opportunities to develop in the '5 Finham Values' that we hold most dear - courageousness, perseverance, integrity, humility and kindness. These are key features of life here. Learners develop confidence, resilience, respect for others and a life-long love of learning, making them valued members of the Coventry community and contributors to both the national and international stages as global citizens.

We endeavour to give all students a passion for learning by providing a broad, exciting and enriching curriculum. Our experienced and committed staff work hard to support all our learners and help prepare them for the future. As an accredited 'professional learning' community we provide quality teacher training across the region, not only developing our own staff, but those in partner schools.

We are committed to excellence, aiming to do everything to the highest possible standard. We want students to be honest with themselves, own mistakes and strive to be better tomorrow than they are today.

We recognise that learning takes place both inside and outside of the classroom. Our extensive extracurricular programme provides the full range of opportunities to help our students develop their own individual interests and gifts.

I look forward to partnering with you as we seek to provide an innovative learning environment for all our staff, students, parents and wider community; an environment that enables our young people to not only have the 'time of their lives' but to also leave well equipped for life and the world of work.

David Bedford
Headteacher

Finham Park Multi Academy Trust



Thank you for your interest in Finham Park School, part of Finham Park Multi Academy Trust. Our ambition is for all schools in our Trust to provide a world-class education for their young people.

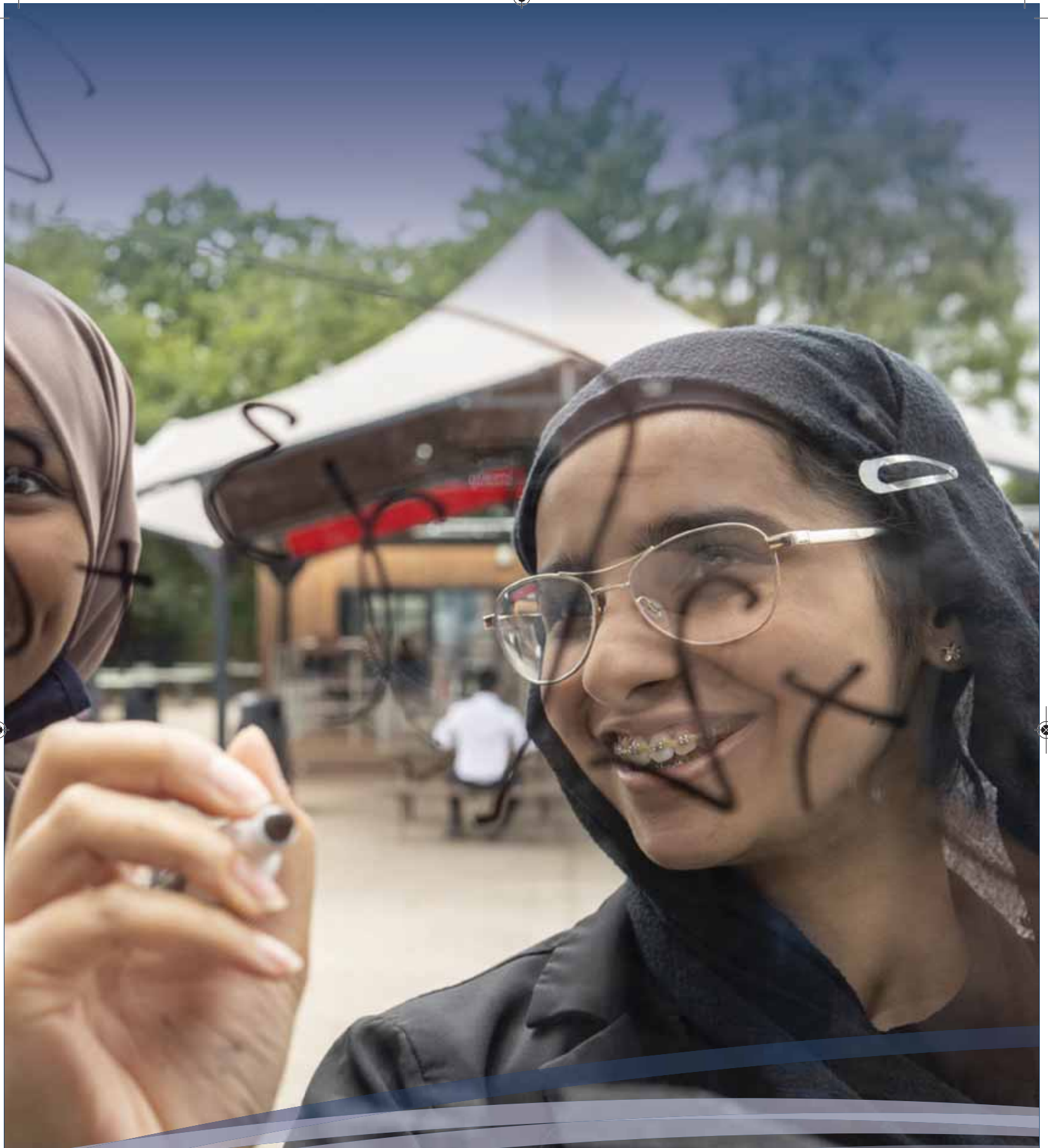
We strive to provide them with the time of their lives and ensure that they all make strong contributions to the communities and societies they live in – locally, nationally and globally.

Our education aims to exceed the highest national and international benchmarks for academic achievement, whilst ensuring young people develop a passion for learning in all its contexts.

I hope you enjoy reading our prospectus.

Mark Bailie
Executive Headteacher





Where students innovate and
work together



“Finham Park
is daring me to believe I can.”

YEAR 11

Where individuals matter



Students are the heart of our school. Not only do we want them to make outstanding progress, we also aim to provide the support they need physically, socially and emotionally.

Our Learning Mentors are the first people students see in the morning. They have the important role of helping students to prepare for the day ahead, asking about their wellbeing, providing them with the information they are going to need and to listen when a student needs someone to talk to. A Learning Mentor is the first person to contact if you want to talk about how your child is settling in. Mentor groups include students across year groups as this helps new students settle in quickly by getting to know older students who take them under their wing.

College Leaders oversee the mentors and ensure that the quality of support and guidance is excellent. They identify students who may need support settling in the early days of transition to secondary school. For older students it can be the case that an even more personalised curriculum is required, so mentors work closely with the Work Related Learning Coordinator to provide this.

Our highly qualified Special Educational Needs and Disabilities team help identify and support students who have a particular need whether it be social, emotional, physical or to help them overcome a barrier to their learning.

At Finham Park School we promote learning and well being so that there is a strong sense of the school living its own values. We leave no stone unturned in fostering the personal development of all students so that they are able to have the 'time of their lives' alongside their education.

We have a full-time counsellor. The school recognises that student well-being is paramount and having a counsellor on site helps students understand how they can begin to manage and process the issues they face. Our aim is to provide an inclusive, personalised environment that encompasses the needs of all of our students, ensuring their time here gives them the skills and confidence for the next steps of their journey.

Rob Morey
Deputy Headteacher

Principled Curriculum Design



We believe in developing a curriculum which not only allows flexibility of approach that meets the needs of each child, but also ensures that no-one gets left behind. We pride ourselves on having a curriculum which responds to the local community and the demands of the 21st Century.

In Year 7, we ensure literacy skills are developed first. Sparks reader is used for every child and FFT Reading Quest is used to support those students who need to review phonics.

Finham Park School offers a broad and balanced curriculum designed to provide all students with a rich and varied educational experience. The school ensures that pupils engage with a wide range of subjects, including mathematics, sciences, languages, humanities, performing arts, art, and design and technology. This diverse curriculum not only supports academic excellence but also encourages creativity, critical thinking, and personal development, preparing students for future success in an ever-changing world.

At Post 16 students are offered two pathways: a more traditional route of qualifications and a more vocational route. This enables all students to dip into both streams as their needs dictate so that they study a curriculum that properly matches their abilities and aspirations.

Alongside our established success in more traditional subjects, we are also one of the pioneer schools for Mandarin teaching in England and have built up a national reputation for the quality of teaching and the achievements of pupils, culminating in our Global Confucius Classroom Award in 2017.

In 2020 we were also delighted to be awarded the Specialist Schools and Academies Trust's 'Principled Curriculum Design' award, placing our school amongst the most effective practice nationally. The Chief Moderator commented that our staff and pupils 'are encouraged to shape and review the curriculum and do it in the context of Finham's wider values of being a true comprehensive school with a local commitment and a global outlook.'

Sarah Megeney
Deputy Headteacher



**"Finham Park School gives
me learning opportunities I never
thought possible."**

YEAR 8



Where no-one gets
left behind

Academic Progress

We pride ourselves on enabling every student to make the best progress imaginable. We aim to develop well rounded individuals and enrich students academically, as well as through a wide range of extracurricular opportunities.

It is the vision of the staff to develop students who love to learn, and in doing so, to enable all students to reach their academic potential.

We have a record of excellent examination results and our progress measures show that students of all abilities make a high level of progress throughout their school career with us. Students are supported at every stage, through an excellent academic mentoring process and innovative teaching practices in the classroom.

As students work towards internal and external examinations, they are equipped with the tools and strategies for revision, and are supported in producing a bespoke revision timetable for themselves. This is developed throughout their time at school to ensure that there are few surprises when they reach their first external examinations.

Students regularly discuss their academic progress with their teachers and mentors who then quickly respond to address their learning needs. This high level study support enables students to achieve their dreams as they achieve the best examination grades possible.



**"Finham Park School is
forming my world class future."**

YEAR 10



World Class People

We are a world class school, and this is reflected in every opportunity that has been handed to us. Throughout our time as Head Students, we have been privileged enough to receive the support from world class teachers and the senior leadership team to implement our visions as young people. Since our appointment, we have been given the platform to academically mentor children who require additional educational support, which has been a rewarding experience for everyone involved.

Furthermore, working with various charities has not only enabled us to raise environmental, social and political awareness, but has also allowed us to steer students towards leaving school as well-rounded individuals. Working within a diverse society, we leave no identity unnoticed; from hosting culture days which allow pupils to showcase their individuality, to celebrating a multitude of religious festivals. On reflection, what makes Finham park school world class is the people within the community itself. This is why we value the student voice so highly, which is made accessible to us through our student council.

At Finham Park School, we strive to illustrate world class attributes every single day. Whether it is enacting what it means to embody our Finham values, or stemming into becoming bold role models, we consistently fulfil our greatest potential.

Along with every child at the school, we feel immense pride in being here and having received an invaluable education to propel us towards adulthood and shape our futures.

Head Students

Responsive high quality teaching



Finham Park School prides itself on the high quality of our classroom teaching; students enjoy lessons from staff who are experienced, enthusiastic and well qualified. 'Responsive teaching' is grounded in the teacher's understanding of and connection with each student as well as their knowledge of education

research and cognitive science. Staff training is ongoing; our staff collaborate both with each other and with colleagues in schools across our Multi Academy Trust to share ideas and examples of great teaching. Our ethos is very much about encouraging experimentation so that lessons are interesting, imaginative and exciting and in which students are invited to be active participants in their learning.

We are dedicated to continuous improvement in our classrooms, encouraging all staff to engage in action research, offering training from some of the most influential educationalists from across the world as well as drawing on the considerable expertise of our staff body. Staff training is centred around Teaching and Learning Communities where resources and practice are shared and trialled. All staff are engaged in Instructional Coaching and thus invested in developing their pedagogical skills so that our students can benefit from teaching which is the best it can be.

Helen Cooke
Assistant Headteacher



**“Finham Park School gives
me learning opportunities I never
thought possible.”**

YEAR 10



Where lifelong
friendships are nurtured.

Pastoral Development



At Finham Park School we offer maximum opportunities for our young people to achieve both academically and socially, instilling in them are our core values of kindness, integrity, perseverance, humility and courageousness.

We take the care of our students very seriously.

Students are given extensive support through a range of services from our pastoral support team including our dedicated, full-time counsellor and student well-being team.

Every student is a member of a College and becomes part of a small, vertical mentor group comprising of a mix of students from all year groups. This gives natural opportunities for student leadership and support everyday. Each morning an engaging and thought provoking programme of activities is delivered allowing students to explore different topics in a safe environment. Each of our colleges, (Asiatic, Barbary, Katanga, Masai and Nubian) has a dedicated college leader and Assistant College Leader who work with mentors to provide support and guidance. The five colleges, being breeds of lion, reflect the characteristics of the Finham lion in strength, poise, care and resilience. They make up the school's pastoral care systems as the 'whole being greater than the sum of its parts'. The college team facilitates and promotes a huge variety of activities before during and after school everyday that students can be involved in.

Bullying is not tolerated anywhere in the school with students taking a lead on anti-bullying initiatives through the Student Council, and instances of bullying being dealt with comprehensively by our team of experienced staff. Every student is recognised as an individual and we aim to ensure that they develop a keen sense of morality and achieve the academic outcomes that will enable them to achieve their desired career paths. Behaviour management processes are founded on restorative justice. This is the means for ensuring connection before correction is achieved with students so that behaviours can be modified to ensure all students can work together in developing their friendships in a healthy supportive manner.

We believe that children will thrive academically if they are happy and secure individuals and we endeavour to provide opportunities for them to grow and develop into successful, well-rounded young people supported by staff making sure they are well cared for and that 'no-one is left behind'.

James Foxon
Assistant Headteacher

Sixth Form



We have great pride in our Sixth Form. Watching the students take steps towards adulthood it is a great privilege especially as they continued to display our core values of kindness, perseverance, humility, courageousness and integrity each year. Our students model the true meaning of excellence and we encourage each individual to grow and develop both personally and academically each day. We aim for our Sixth Form to feel

like a family as well as a learning community; we encourage students of diverse backgrounds and circumstances to get to know and understand each other as part of a tolerant and caring society. We pride ourselves on being inclusive. Everyone is treated as an individual and is inspired on a daily basis to be the best they can be.

Our young people are the foundations of the future and are likely to undertake careers and responsibilities which do not yet exist and are certainly not widely known. We believe it is our responsibility as a school to nurture them to be kind and courageous but also to expect the unexpected. We are preparing them to take the next steps in their lives away from the safety of school, a responsibility we take very seriously. We commit to helping them to take the most appropriate pathway post-18 and provide high quality support at every stage of the process.

We have high expectations in all aspects of development whether that be through the strong drive for academic success or through our exceptional support systems that are so fundamental for the wellbeing of every member of their community. We encourage our sixth formers to be a key part of the whole school community through our student council and the interactions they have with the main school on a daily basis. We have a strong community and our sixth form students are the bastions of the excellent education we are committed to providing.

Suzie Green
Head of Post-16 and Student Leadership

A close-up, low-angle shot of a young man with dark, slightly messy hair, looking down intently at a book. He is wearing a dark blue suit jacket over a white shirt and a patterned tie. The background is a soft, out-of-focus gradient of blue and white. The bottom of the image features a dark blue banner with white text and a website address.

Where the leaders of
today begin



**Where creative minds
are formed.**

Aspiration and Achievement through Creativity



The faculty of Creative Design has a strong identity and sense of direction offering increasingly unique opportunities for our young learners to engage in project work that is personalized, tactile and first hand. Our students learn to solve real time problems and they develop into confident reflective and critical learners.

We constantly refine the mapping of our curriculum pathways to offer current, relevant and diverse inspirational educational experiences for our students. We have a history of establishing and working closely over time with local and national external organisations to forge strong industry links with external agencies, specialist facilitators, architects, designers and artists.

We work closely with a growing number of departments across the city and this brings a sense of community and connection. We are proud to regularly provide our students with exciting opportunities to attend local, national and international trips. This brings a sense of independent adventure for our students and creates memories for our pupils that reach far beyond the classroom. Running through the heart of each student's curriculum at Finham Park School is a focus on creative thought and experiences that enable them to grow as versatile, responsive and imaginative thinkers.

Duncan Radford
Head of Creative Design

Ingenuity in STEM



From Rocket Cars to Robots, Animatronics to Drones, our students are inspired to learn in innovative ways by learning new skills to solve challenging problems, whilst increasing their depth of understanding of Science, Technology, Engineering and Maths

Through a sustained collaboration with a variety of local and national industry partners. We engage in projects and competitions that provide enriching experiences that develop transferable skills, vital to success for both education and employability.

Our students thrive when competing in national and international competitions, priding themselves on their success whilst supporting and mentoring others.

As a training hub for VEX robotics, we host an annual competition which has attracted visiting teams from as far away as China. This strong international relationship builds on our pursuit to deliver World Class STEM education and continues to grow as we champion STEM projects with schools in Shanghai.

Through this international collaboration, relationships are formed and aspirations toward STEM careers are raised, creating an exciting and challenging future for our students.

Pete Maguire
Head of Robotics



Where the impossible
is made possible



How to apply...

Parents should apply via the local authority as with other schools in Coventry.

For further information and to view our full Admissions Policy, including details of our oversubscription criteria, as well as our appeals procedure, please visit our website

www.finhampark.co.uk





FINHAM PARK
MULTI ACADEMY TRUST

Green Lane
Coventry
CV3 6EA
02476 418135

@FinhamPark
www.finhampark.co.uk
admin@finhampark.co.uk